

# GLidar

## Mobile lidar scanner



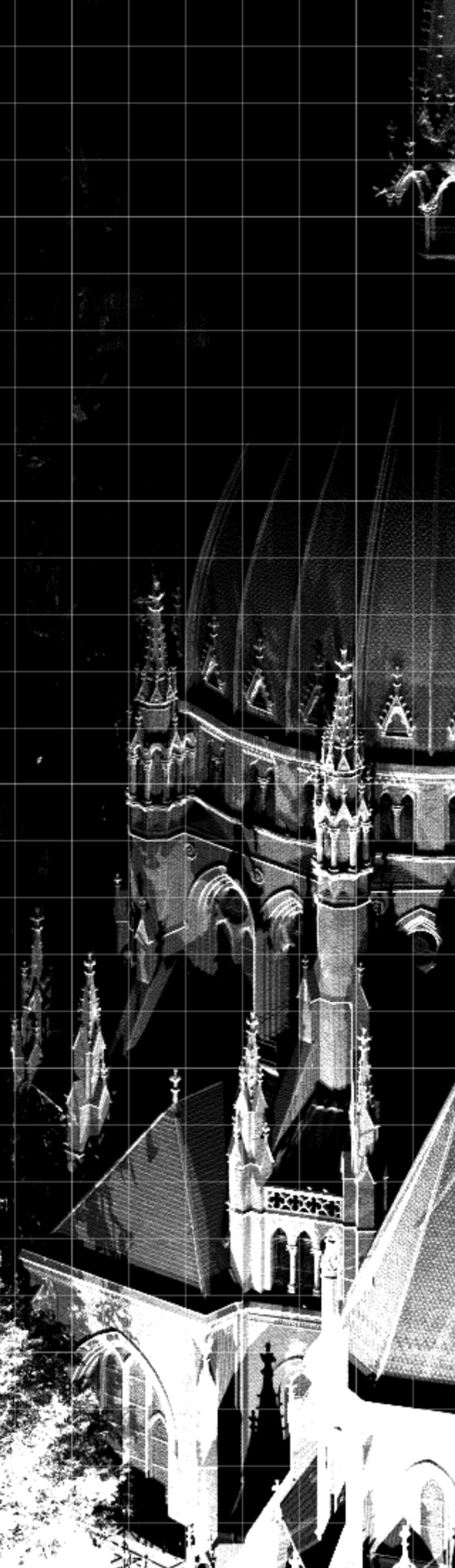
Delivers instant result

Real time data processing,  
3D model generation  
and visualization




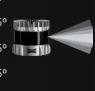




Modular design, removable  
handle and battery

Samples up to 5.2 million  
points per second

Filters for horizontal  
field of view, min/max  
distance, reflectivity



## GLidar specifications

Lidar sensor type	OS0 REV7 Ultra-wide view	OS1 REV7 Mid-range
Vertical resolution (channels)	32, 64 or 128	32, 64 or 128
Maximum representable range	~100 m	~200 m
Range (10% reflective target @ 90% detection prob.)	35 m	90 m
Minimum range [1]	0.1 m	0.1 m
Accuracy	2 cm	2 cm
Vertical field of view	90°	45°
Vertical angular resolution	2.8° (32ch) 1.4° (64ch) 0.7° (128ch)	1.4° (32ch) 0.7° (64ch) 0.35° (128ch)
Horizontal resolution	512, 1024, or 2048	512, 1024, or 2048
Horizontal field of view	360°	360°
Horizontal angular resolution	up to 0.18°	0.18°
Points per second	up to 5,242,880	up to 5,242,880
Frame rate	10 or 20 Hz	10 or 20 Hz
Number of returns	2 (strongest, second strongest or last)	2 (strongest, second strongest or last)
Operating voltage	18-24 V	18-24 V
Operating temperature [2]	-40 to +70 °C	-40 to +70 °C
Beam configuration options	only for 32ch and 64ch	only for 32ch and 64ch
Field of view left	Uniform 90°  0.7° or 1.4°	45°  0.35° or 0.7°
Angular resolution right (128ch and 64ch for Uniform)	Gradient  5.6° 2.8° 1.4° 0.7° 1.4° 2.8° -16.5° -28° -45°	 2.8° 1.4° 0.7° 0.35° 1.4° 0.7° -14° -22.5°
Above Horizon	45°  0.7°	22.5°  0.36°
Below Horizon	45°  0.7°	22.5°  0.36°
[1] Blockage detection binary flag between 0 m and the minimum range (v2.0 beta feature)		
[2] Between +53°C to +60°C, sensor automatically reduces range (max 20% range reduction)		
Errors and technical modification subject to change.		



OS0



OS1

Battery Any common electrical tool battery

Connectivity Ethernet, WiFi, BT, USB 3.2

Export formats .laz, .las, .e57, .ply, .pcd, .xyz

Ingress protection IP 54

Size L × W × H, weight

Scanner with handle and battery 130 × 97 × 320 mm, 2.5 kg

Scanner with battery w/o handle 130 × 97 × 200 mm, 2.3 kg

Scanner w/o battery and handle 130 × 97 × 148 mm, 1.6 kg

Scanner w/o battery mount, flat 130 × 97 × 131 mm, 1.5 kg

## Contact us

[office@general-laser.at](mailto:office@general-laser.at)

[general-laser.at](http://general-laser.at)

+43 1 890 2002

